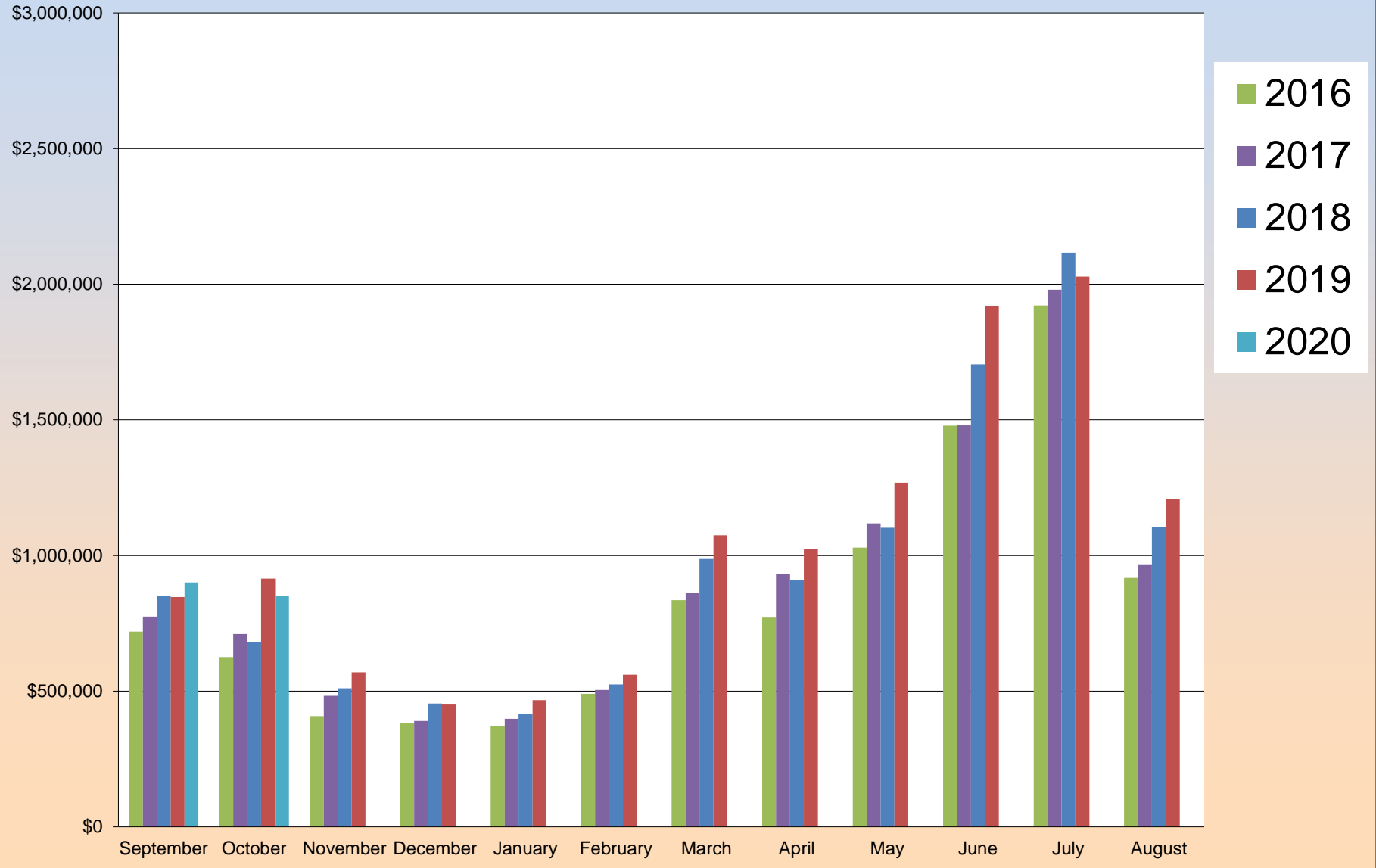


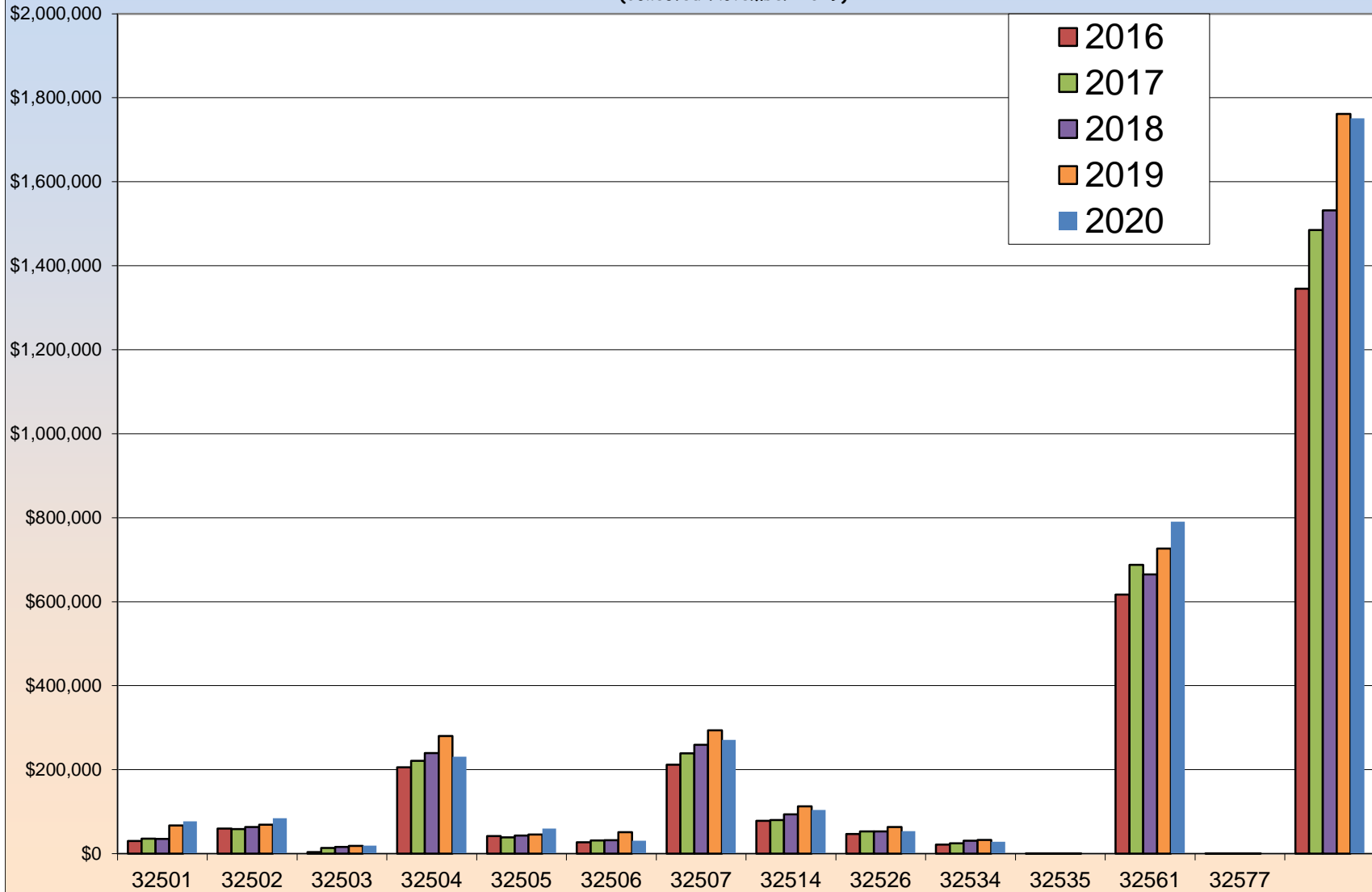
FOUR PERCENT TOURIST DEVELOPMENT TAX COLLECTION DATA
REPORTED IN FISCAL YEAR FORMAT
ESCAMBIA COUNTY FLORIDA
AS OF NOVEMBER 2019

Zip Code	Fiscal Year 2020 YTD Collected	Fiscal Year 2019 YTD Collected	Difference	% Change
32501	77,142	67,018	10,124	15%
32502	84,475	69,256	15,219	22%
32503	19,493	18,494	999	5%
32504	231,086	279,962	(48,876)	-17%
32505	60,125	45,804	14,321	31%
32506	30,853	51,003	(20,150)	-40%
32507	270,967	293,788	(22,821)	-8%
32514	104,080	112,481	(8,401)	-7%
32526	53,827	63,736	(9,909)	-16%
32534	28,213	32,690	(4,477)	-14%
32535	439	209	230	110%
32561	790,322	726,840	63,482	9%
32562	-	-	-	0%
32577	\$ 67	132	(65)	-49%
Total	\$ 1,751,089	\$ 1,761,413	\$ (10,324)	-1%

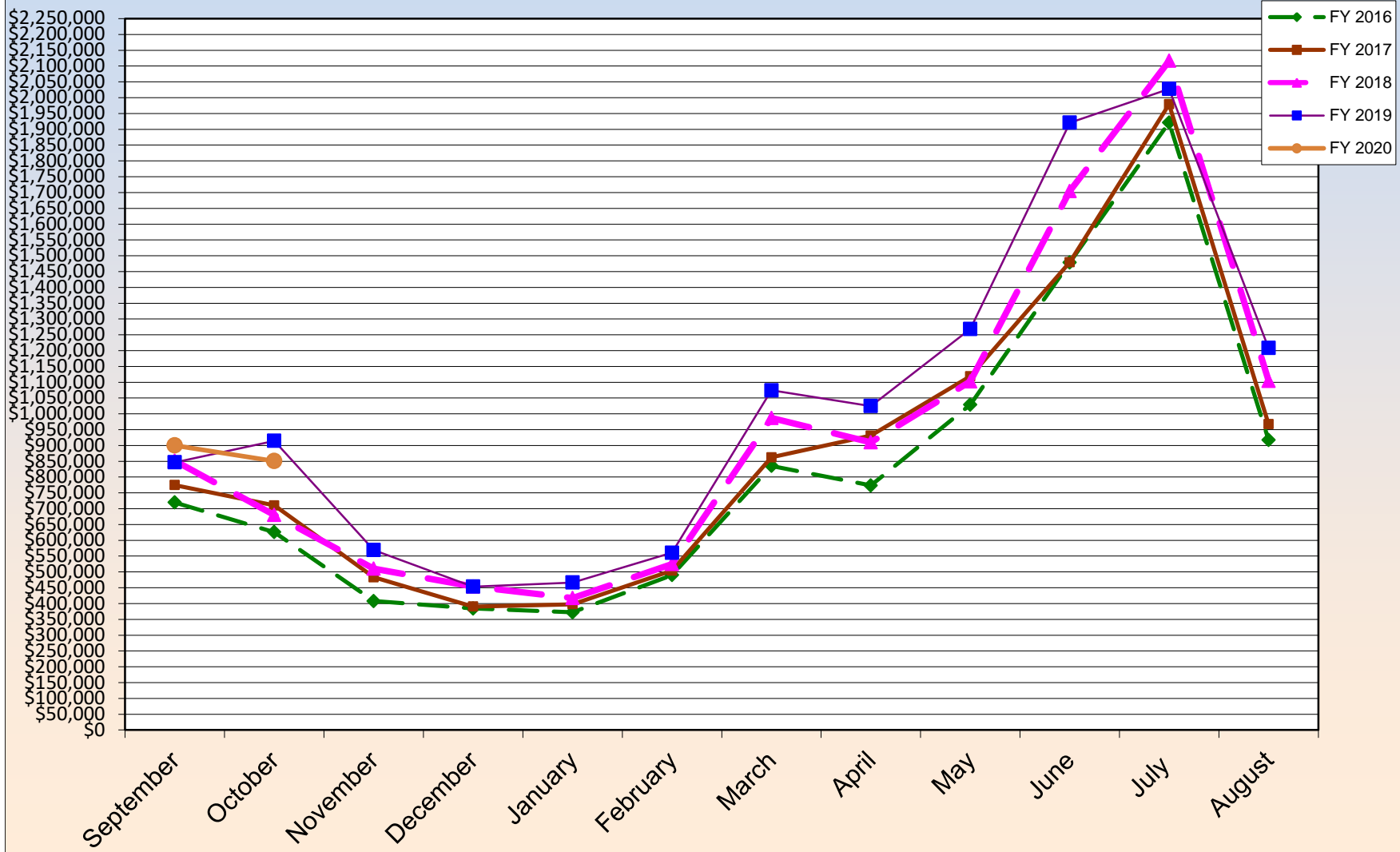
Tourist Development Tax Collections
5-Year Comparison
Returns through October 31, 2019 (Collected in November 2019)



Tourist Development Tax Collections
5-Year Comparison on a Monthly Basis
Returns through October 31, 2019
(Collected November 2019)



**TOURIST DEVELOPMENT TAX
5 YEAR TRENDLINE
FY 2016 - FY 2020**
Returns through October 31, 2019 (Collected in November 2019)



FOUR PERCENT TOURIST DEVELOPMENT TAX COLLECTION DATA
 ESCAMBIA COUNTY FLORIDA
 FISCAL YEAR 2020
 AS OF November 2019

Month of Collection	Zip Code									
	32501		32502		32503		32504		32505	
	Downtown Area	% OF Total	Other Downtown Area	% OF Total	Cordova Mall & South Area	% OF Total	Davis & Scenic Hwy both of I-10 including Airport Area	% OF Total	South of Michigan Av East of Mobile Hwy West of Pace Blvd	% OF Total
10/19	\$ 38,864	4%	\$ 43,390	5%	\$ 10,319	1%	\$ 115,910	13%	\$ 18,785	2%
11/19	\$ 38,278	4%	\$ 41,085	5%	\$ 9,174	1%	\$ 115,176	14%	\$ 41,340	5%
Total	\$ 77,142	4%	\$ 84,475	5%	\$ 19,493	1%	\$ 231,086	13%	\$ 60,125	3%

Month of Collection	Zip Code									
	32506		32507		32514		32526		32534	
	Lillian Hwy & Highway 98 Area	% OF Total	Bayou Chico to Perdido Key South of Sorrento Area	% OF Total	Palafox & Scenic Hwy North of I-10 Area	% OF Total	Mobile Hwy North of Michigan Avenue Area	% OF Total	I-10 & Pensacola Blvd North Area	% OF Total
10/19	\$ 15,041	2%	\$ 140,739	16%	\$ 53,089	6%	\$ 27,938	3%	\$ 15,692	2%
11/19	\$ 15,812	2%	\$ 130,228	15%	\$ 50,990	6%	\$ 25,889	3%	\$ 12,521	1%
Total	\$ 30,853	2%	\$ 270,967	15%	\$ 104,080	6%	\$ 53,827	3%	\$ 28,213	2%

Month of Collection	Zip Code								Total Month	% OF Total
	32535		32561		32562		32577			
	Century (Other) Area	% OF Total	Pensacola Beach Area	% OF Total	Other	% OF Total	Molino Area	% OF Total		
10/19	\$ 174	0%	\$ 420,258	47%	\$ -	0%	\$ -	0%	\$ 900,200	100%
11/19	\$ 265	0%	\$ 370,064	43%	\$ -	0%	\$ 67	0%	\$ 850,890	100%
Total	\$ 439	0%	\$ 790,322	45%	\$ -	0%	\$ 67	0%	\$ 1,751,089	

FOUR PERCENT TOURIST DEVELOPMENT TAX COLLECTION DATA
 ESCAMBIA COUNTY FLORIDA
 FISCAL YEAR 2019
 AS OF November 2018

Month of Collection	Zip Code									
	32501		32502		32503		32504		32505	
	Downtown Area	% OF Total	Other Downtown Area	% OF Total	Cordova Mall & South Area	% OF Total	Davis & Scenic Hwy South of I-10 including Airport Area	% OF Total	South of Michigan Av East of Mobile Hwy West of Pace Blvd	% OF Total
10/18	33,060	4%	29,038	3%	8,340	1%	120,568	14%	16,401	2%
11/18	33,959	4%	40,218	4%	10,154	1%	159,394	17%	29,404	3%
Total	67,018	4%	69,256	4%	18,494	1%	279,962	16%	45,804	3%

Month of Collection	Zip Code									
	32506		32507		32514		32526		32534	
	Lillian Hwy & Highway 98 Area	% OF Total	Bayou Chico to Perdido Key South of Sorrento Area	% OF Total	Palafox & Scenic Hwy North of I-10 Area	% OF Total	Mobile Hwy North of Michigan Avenue Area	% OF Total	I-10 & Pensacola Blvd North Area	% OF Total
10/18	23,343	3%	148,106	17%	47,657	6%	25,767	3%	13,922	2%
11/18	27,659	3%	145,682	16%	64,824	7%	37,969	4%	18,767	2%
Total	51,003	3%	293,788	17%	112,481	6%	63,736	4%	32,690	2%

Month of Collection	Zip Code								Total Month	% OF Total
	32535		32561		32562		32577			
	Century (Other) Area	% OF Total	Pensacola Beach Area	% OF Total	Other	% OF Total	Molino Area	% OF Total		
10/18	209	0%	380,137	45%	-	0%	92	0%	846,640	100%
11/18	-	0%	346,703	38%	-	0%	40	0%	914,773	100%
Total	209	0%	726,840	41%	-	0%	132	0%	1,761,413	

**Tourist Development Tax Collection Data
Reported in Fiscal Year Format
Escambia County Florida**

THREE (3%) PERCENT TOURIST TAX DOLLARS COLLECTED 2011-2020											
Month Of	For The										
Collection	Month Of	2011	2012	2013	2014	2015	2016	2017	2018	2019	2020
OCT	SEP	\$ 321,850	\$ 343,637	\$ 398,300	\$ 385,209	\$ 442,268	\$ 539,766	\$ 580,905	\$ 638,832	\$ 634,980	\$ 675,150
NOV	OCT	\$ 276,214	\$ 304,579	\$ 325,198	\$ 335,284	\$ 411,054	\$ 469,351	\$ 532,757	\$ 510,223	\$ 686,080	\$ 638,167
TOTAL		\$ 598,064	\$ 648,216	\$ 723,498	\$ 720,493	\$ 853,322	\$1,009,117	\$ 1,113,662	\$1,149,056	\$ 1,321,060	\$ 1,313,317

**TOURIST DEVELOPMENT TAX COLLECTION DATA
 REPORTED IN FISCAL YEAR FORMAT
 ESCAMBIA COUNTY, FLORIDA**

		ADDITIONAL ONE (1%) PERCENT TOURIST TAX DOLLARS COLLECTED 2011-2020									
Month Of	For The										
Collection	Month Of	2011	2012	2013	2014	2015	2016	2017	2018	2019	2020
OCT	SEP	\$ 107,283	\$ 114,546	\$ 132,767	\$ 128,403	\$ 147,425	\$ 179,922	\$ 193,635	\$ 212,944	\$ 211,660	\$ 225,050
NOV	OCT	\$ 92,072	\$ 101,526	\$ 108,399	\$ 111,761	\$ 137,018	\$ 156,450	\$ 177,586	\$ 170,074	\$ 228,693	\$ 212,722
TOTAL		\$ 199,355	\$ 216,072	\$ 241,166	\$ 240,164	\$ 284,443	\$ 336,372	\$ 371,221	\$ 383,019	\$ 440,353	\$ 437,772