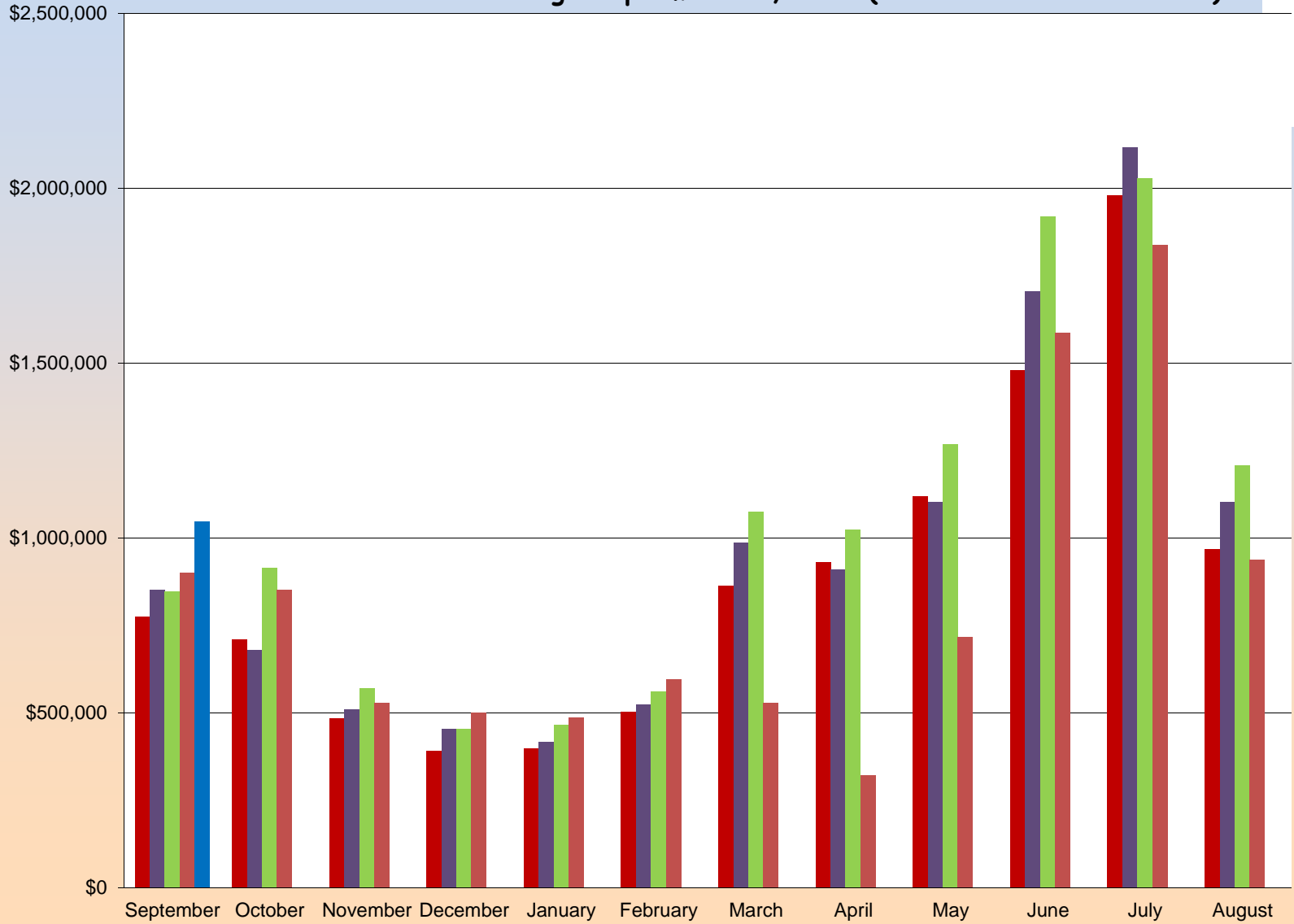


**FOUR PERCENT TOURIST DEVELOPMENT TAX COLLECTION DATA
 REPORTED IN FISCAL YEAR FORMAT
 ESCAMBIA COUNTY FLORIDA
 AS OF SEPTEMBER 2021**

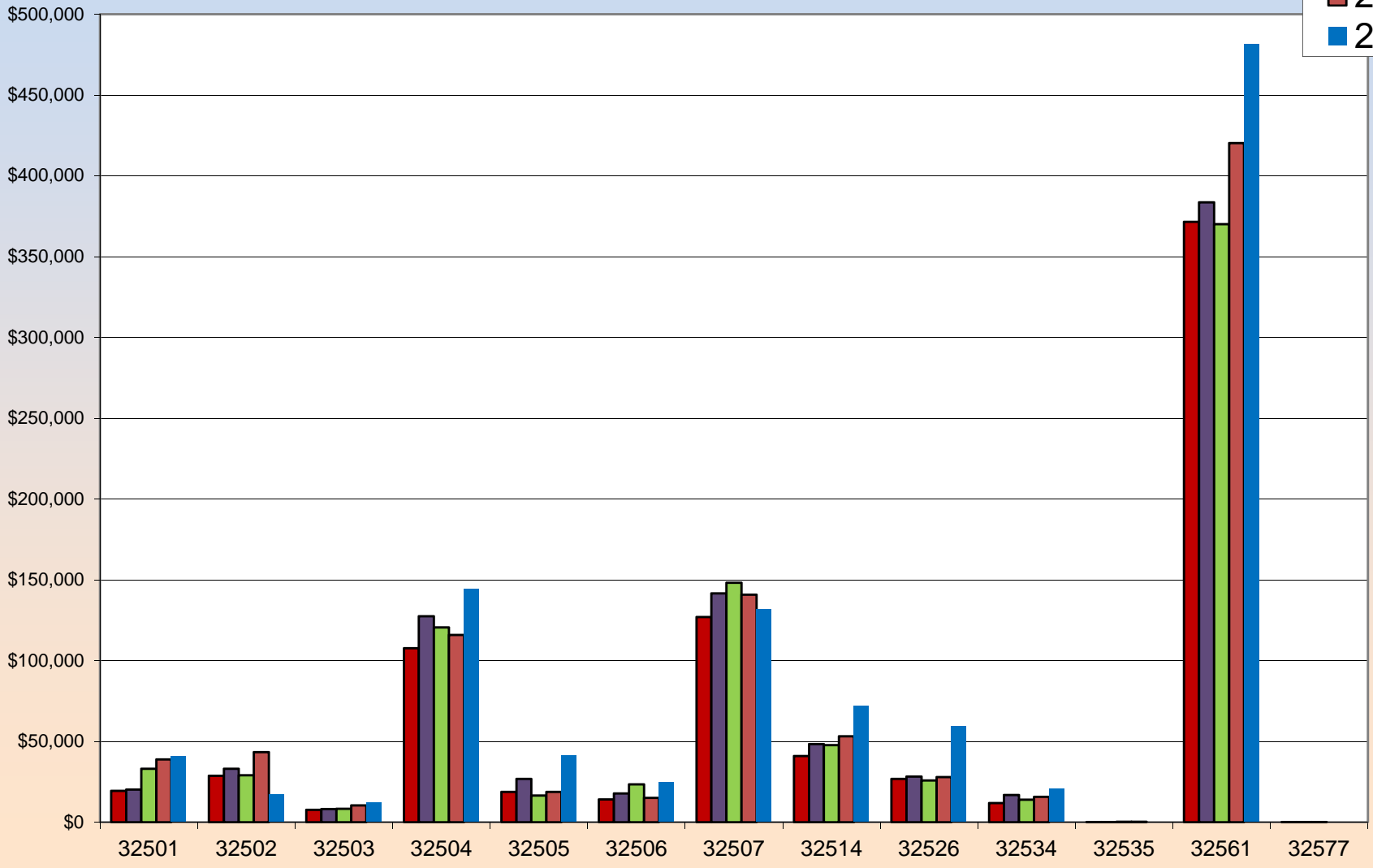
Zip Code	Fiscal Year 2021 YTD Collected	Fiscal Year 2020 YTD Collected	Difference	% Change
32501	40,720	38,864	1,856	5%
32502	17,135	43,390	(26,255)	-61%
32503	12,436	10,319	2,117	21%
32504	144,210	115,910	28,300	24%
32505	41,172	18,785	22,386	119%
32506	24,832	15,041	9,791	65%
32507	131,875	140,739	(8,864)	-6%
32514	72,320	53,089	19,231	36%
32526	59,297	27,938	31,359	112%
32534	20,603	15,692	4,911	31%
32535	153	174	(21)	-12%
32561	481,735	420,258	61,477	15%
32562	-	-	-	0%
32577	\$ -	-	-	0%
Total	\$ 1,046,488	\$ 900,200	\$ 146,289	16%

Tourist Development Tax Collections
5-Year Comparison by Month
 Returns through September 30, 2020 (Collected in October 2020)

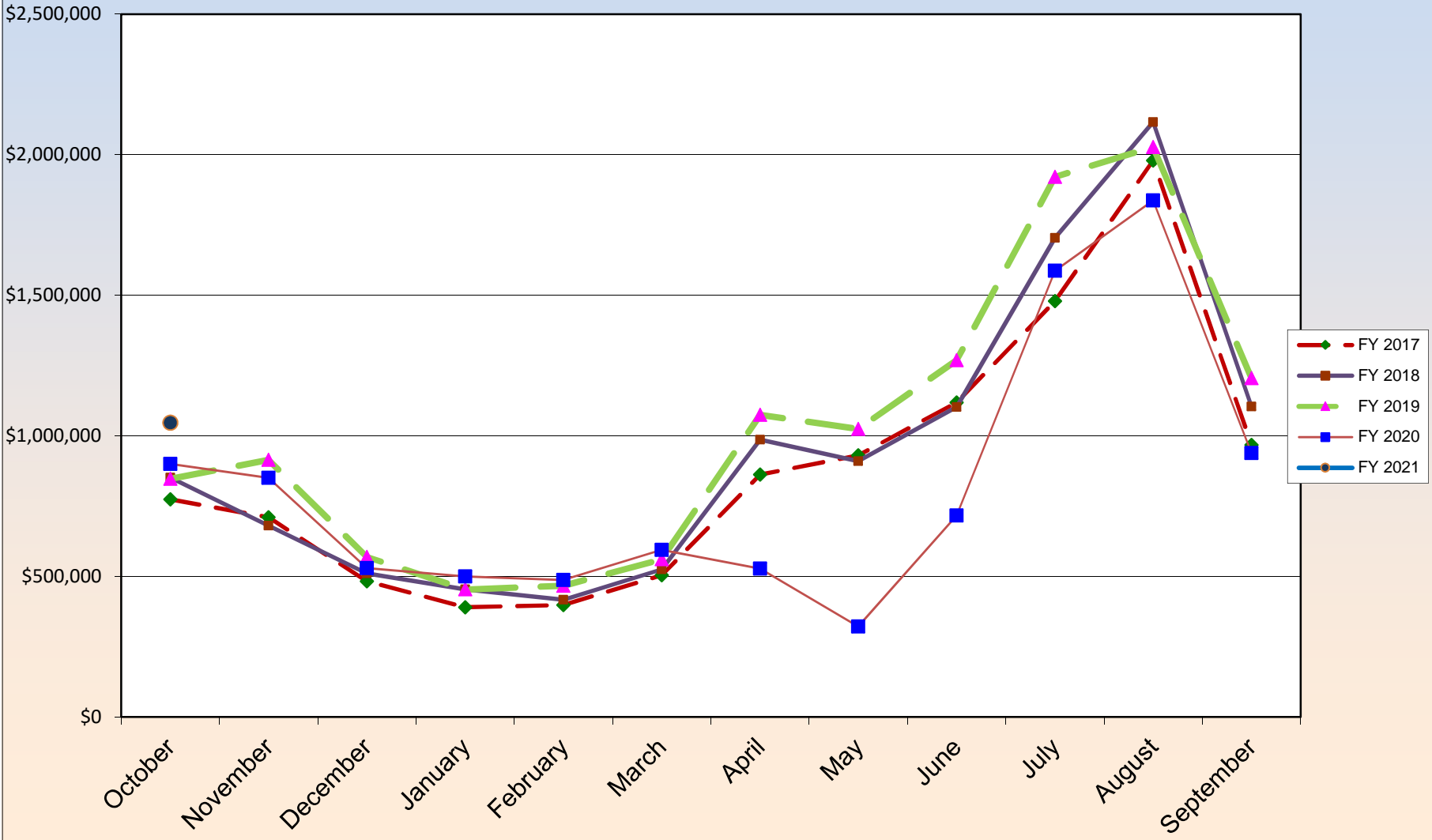
- 2017
- 2018
- 2019
- 2020
- 2021



Tourist Development Tax Collections
5-Year Comparison on a Monthly Basis by Zip Code
Returns through September 30, 2020 (Collected October 2020)



**TOURIST DEVELOPMENT TAX
5 YEAR TRENDLINE
FY 2017 - FY 2021
Returns through September 30, 2020 (Collected in October 2020)**



**FOUR PERCENT TOURIST DEVELOPMENT TAX COLLECTION DATA
 ESCAMBIA COUNTY FLORIDA
 FISCAL YEAR 2021
 AS OF OCTOBER 2020**

Month of Collection	Zip Code									
	32501		32502		32503		32504		32505	
	Downtown Area	% OF Total	Other Downtown Area	% OF Total	Cordova Mall & South Area	% OF Total	Davis & Scenic Hwy South of I-10 including Airport Area	% OF Total	South of Michigan Av East of Mobile Hwy West of Pace Blvd	% OF Total
10/20	40,720	4%	17,135	2%	12,436	1%	144,210	14%	41,172	4%
Total	40,720	4%	17,135	2%	12,436	1%	144,210	14%	41,172	4%

Month of Collection	Zip Code									
	32506		32507		32514		32526		32534	
	Lillian Hwy & Highway 98 Area	% OF Total	Bayou Chico to Perdido Key South of Sorrento Area	% OF Total	Palafox & Scenic Hwy North of I-10 Area	% OF Total	Mobile Hwy North of Michigan Avenue Area	% OF Total	I-10 & Pensacola Blvd North Area	% OF Total
10/20	24,832	2%	131,875	13%	72,320	7%	59,297	6%	20,603	2%
Total	24,832	2%	131,875	13%	72,320	7%	59,297	6%	20,603	2%

Month of Collection	Zip Code									
	32535		32561		32562		32577		Total Month	% OF Total
	Century (Other) Area	% OF Total	Pensacola Beach Area	% OF Total	Other	% OF Total	Molino Area	% OF Total		
10/20	153	0%	481,735	46%	-	0%	-	0%	1,046,488	100%
Total	153	0%	481,735	46%	-	0%	-	0%	1,046,488	100%

**FOUR PERCENT TOURIST DEVELOPMENT TAX COLLECTION DATA
 ESCAMBIA COUNTY FLORIDA
 FISCAL YEAR 2020
 AS OF OCTOBER 2019**

Month of Collection	Zip Code									
	32501		32502		32503		32504		32505	
	Downtown Area	% OF Total	Other Downtown Area	% OF Total	Cordova Mall & South Area	% OF Total	Davis & Scenic Hwy South of I-10 including Airport Area	% OF Total	South of Michigan Av East of Mobile Hwy West of Pace Blvd	% OF Total
10/19	\$ 38,864	4%	\$ 43,390	5%	\$ 10,319	1%	\$ 115,910	13%	\$ 18,785	2%
Total	\$ 38,864	4%	\$ 43,390	5%	\$ 10,319	1%	\$ 115,910	13%	\$ 18,785	2%

Month of Collection	Zip Code									
	32506		32507		32514		32526		32534	
	Lillian Hwy & Highway 98 Area	% OF Total	Bayou Chico to Perdido Key South of Sorrento Area	% OF Total	Palafox & Scenic Hwy North of I-10 Area	% OF Total	Mobile Hwy North of Michigan Avenue Area	% OF Total	I-10 & Pensacola Blvd North Area	% OF Total
10/19	\$ 15,041	2%	\$ 140,739	16%	\$ 53,089	6%	\$ 27,938	3%	\$ 15,692	2%
Total	\$ 15,041	2%	\$ 140,739	16%	\$ 53,089	6%	\$ 27,938	3%	\$ 15,692	2%

Month of Collection	Zip Code									
	32535		32561		32562		32577		Total Month	% OF Total
	Century (Other) Area	% OF Total	Pensacola Beach Area	% OF Total	Other	% OF Total	Molino Area	% OF Total		
10/19	\$ 174	0%	\$ 420,258	47%	\$ -	0%	\$ -	0%	\$ 900,200	100%
Total	\$ 174	0%	\$ 420,258	47%	\$ -	0%	\$ -	0%	\$ 900,200	100%

**Tourist Development Tax Collection Data
Reported in Fiscal Year
Escambia County Florida**

**THREE (3%) PERCENT TOURIST TAX DOLLARS
COLLECTED 2012-2021**

Month Of Collection	For The Month Of										
		2012	2013	2014	2015	2016	2017	2018	2019	2020	2021
OCT	SEP	\$ 343,637	\$ 398,300	\$ 385,209	\$ 442,268	\$ 539,766	\$ 580,905	\$ 638,832	\$ 634,966	\$ 675,150	\$ 784,866
TOTAL		\$ 343,637	\$ 398,300	\$ 385,209	\$ 442,268	\$ 539,766	\$ 580,905	\$ 638,832	\$ 634,966	\$ 675,150	\$ 784,866

**Tourist Development Tax Collection Data
Reported in Fiscal Year
Escambia County Florida**

**ADDITIONAL ONE (1%) PERCENT TOURIST TAX DOLLARS
COLLECTED 2012-2021**

Month of Collection	For the Month Of	2012	2013	2014	2015	2016	2017	2018	2019	2020	2021
		OCT	SEP	\$ 114,546	\$ 132,767	\$ 128,403	\$ 147,425	\$ 179,922	\$ 193,635	\$ 212,944	\$ 211,655
TOTAL		\$ 114,546	\$ 132,767	\$ 128,403	\$ 147,425	\$ 179,922	\$ 193,635	\$ 212,944	\$ 211,655	\$ 225,050	\$ 261,622